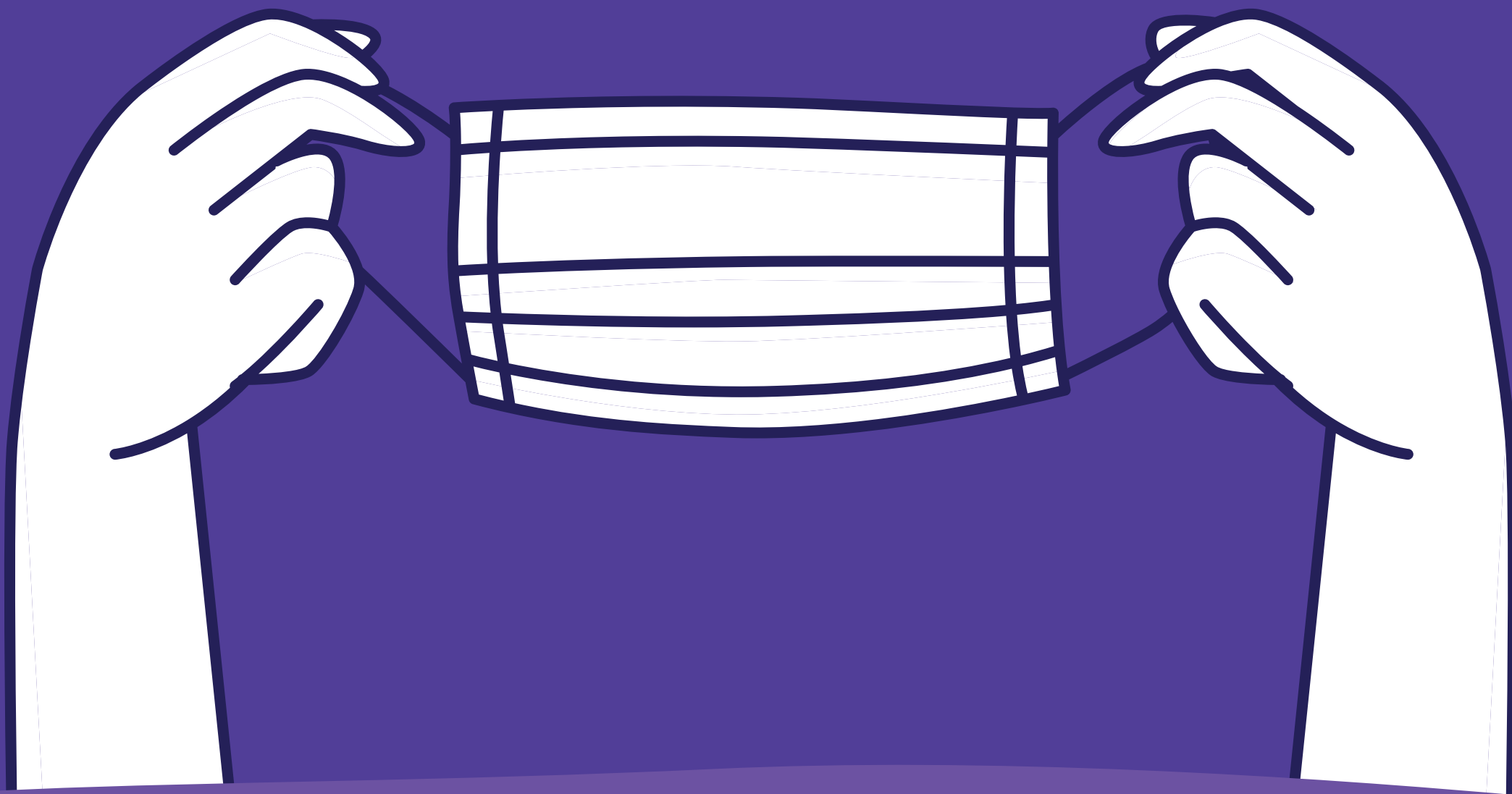


# Masks are required in all public indoor settings for all people born in 2016 or earlier (5+).



There are exemptions for:

- \*Participants who are in the field of play (taking part in a gymnastics class and/or related activity).
- \*People who are less than 5 years of age.
- \*People with health conditions or with physical, cognitive, or mental impairments who cannot wear one.
- \*People who cannot remove a mask on their own.
- \*People who need to remove their masks to communicate due to another person's hearing impairment.
- \*People consuming food or a beverage in areas designated for those purposes by KCGC staff.
- \*While communicating with a person who has a hearing impairment.

A face shield is not a substitute for a mask as it has an opening below the mouth.