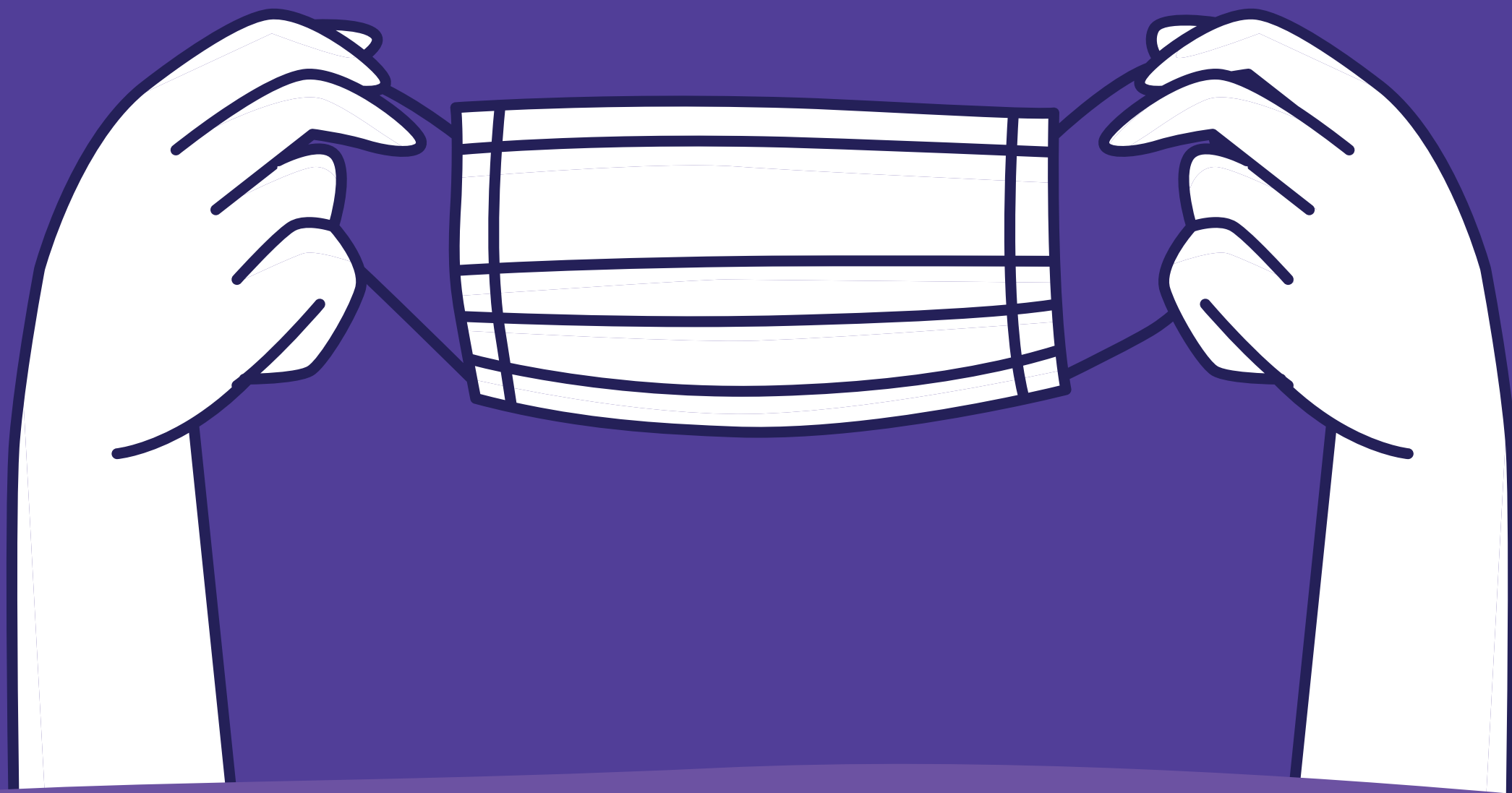


**Masks are required in all public indoor settings for all people born in 2012 or earlier (9+).**



**There are exemptions for:**

- People with health conditions or with physical, cognitive or mental impairments who cannot wear one
- People who cannot remove a mask on their own
- Children under the age of 9
- People who need to remove their masks to communicate due to another person's hearing impairment

**A face shield is not a substitute for a mask as it has an opening below the mouth.**